



LED INDUSTRIAL LIGHT

**2022**

**IEBSA TECHNOLOGY NINGBO CO.,LTD**

**BSA**  
bright side asia

# Overview

IEBSA Group was founded in 2013, is the national high-tech enterprises and a joint venture in Taiwan, America, Mexico and China, Located in Ningbo. IEBSA is a factory for Industrial & Public Lighting, providing services on designing, has been focused on PLEP chips and PCI heat sink technology, set up a PLEP Chip On Copper Board tech oriented R&D center, has a R&D team led by experts in the field of heat transfer technology.

All the products are UL/CUL/IEC/CE/CB/RoHs/LM-80 certified

## Partenrs



INVENTRONICS

PHILIPS

OSRAM



CREE

LUMILEDS

SAMSUNG

merrytek

HAISEN

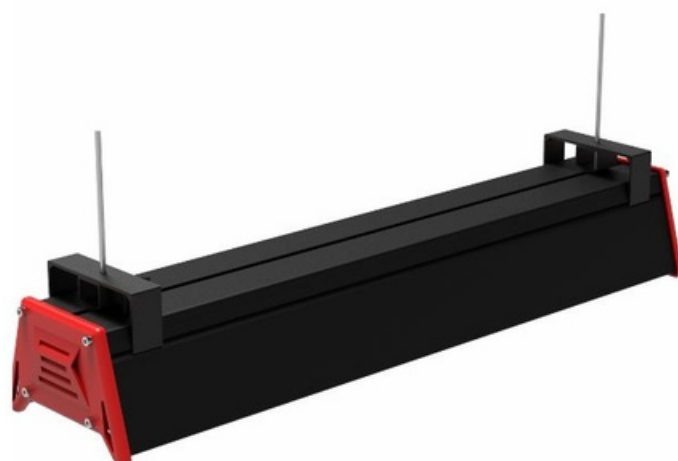
RUILEON  
ELECTRONICS





## BENEFITS

- **Intelligent working:** On/Off Function, Normal Motion detecting, Daylight Threshold.
- Metal Chain, Bracket installation
- Self-Cleaning, Non-dusk
- Excellent Heat Dissipation, Leave outlet, though the air circulation in the radiator to speed up the heat
- High Luminous 135-150Lm/w
- UL, CUL, CE, RoHS, IEC certificates



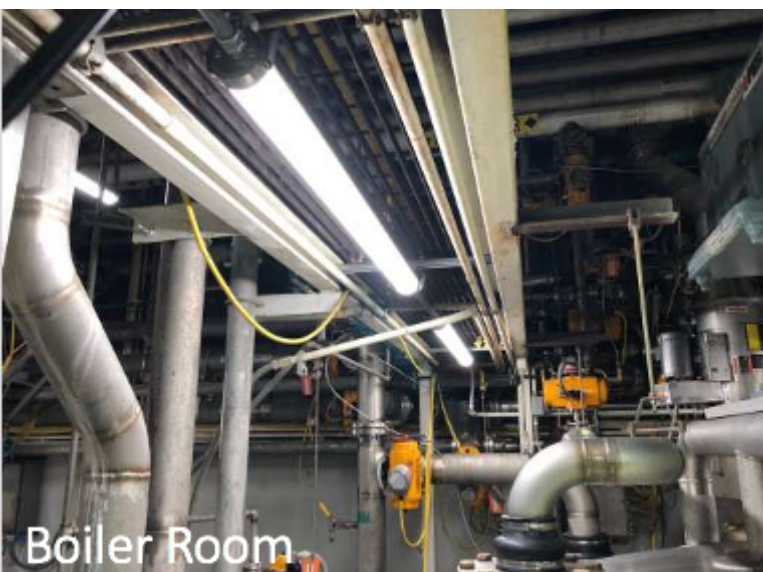
## Technical Parameter

Model	Power	Input Voltage	Power Factor	Light Efficiency	CCT	CRI	Dimension (mm)
BSA-LH-DCT0050-201	50W	AC90-305Vac 50/60Hz	≥0.95	6750LM	2700-6500K	≥75	300*139.8*11.5
BSA-LH-DCT0100-201	100W			13500LM			600*139.8*11.5
BSA-LH-DCT0150-201	150W			20250LM			900*139.8*11.5
BSA-LH-DCT0200-201	200W			27000LM			1200*139.8*11.5



# LED Poultry Light

20W-60W



Boiler Room



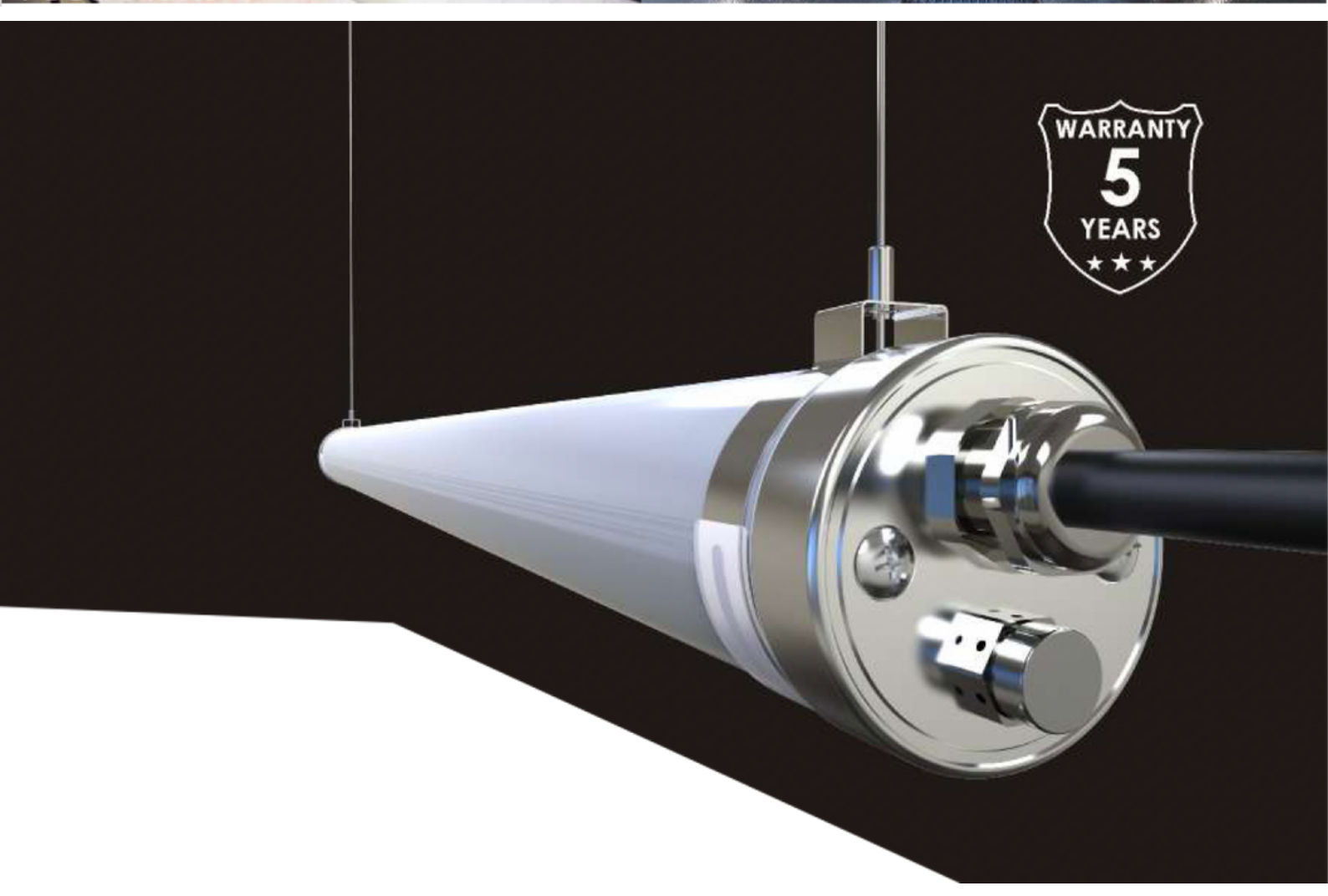
Farm



Food Plant



Car Wash



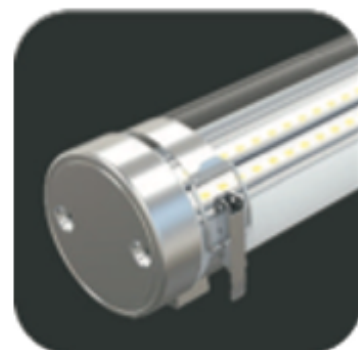


# LED Poultry Light

Anti-corrosion & Anti-UV  
No water condensation  
S304 / S316 Components  
Water jet clean  
850°C glow wire test  
L80B10(Ta=25°C)>50,000hrs



IP69 IK10



## Technical Parameter

Cover	Model	Power	Protection	Input Voltage	Power Factor	Light Efficiency	CCT	CRI	SDCM	Beam Angle
PC & PMMA	BSA-LL-PLX0020-001	20W	IP69K/IK10	AC100-277V 50/60Hz	≥0.95	Frosted : 120-130Lm/w Transparent : 130-140Lm/w	3000-6000K	≥80	<3	120°
	BSA-LL-PLX0036-001	36W								
	BSA-LL-PLX0045-001	45W								
PC	BSA-LL-PLX0030-001	30W								
	BSA-LL-PLX0050-001	50W								
	BSA-LL-PLX0060-001	60W								



## BENEFITS

- **Intelligent working:** On/Off Function, Normal Motion detecting, Daylight Threshold
- Aluminum Housing, Excellent Heat Dissipation
- Tempered PC
- High Luminous 135Lm/w
- IP66
- CE, RoHS, IEC certificates

**5&7**  
YEARS  
WARRANTY



ON/OFF function



Normal motion detecting



Daylight threshold



**LM-80 IP66**



## Technical Parameter

Model	Power	Input Voltage	Power Factor	Light Efficiency	CCT	CRI	Dimension (mm)
BSA-LL-DCT0030-005	30W	AC90-265Vac 50/60Hz	≥0.95	3900LM	2100-6500K	≥75	1200x90x74
BSA-LL-DCT0040-005	40W			5200LM			1200x90x74
BSA-LL-DCT0050-005	50W			6500LM			1500x90x74
BSA-LL-DCT0060-005	60W			7800LM			1500x90x74

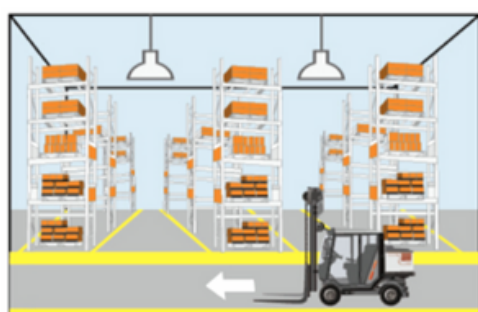


# Emergency Industrial Light

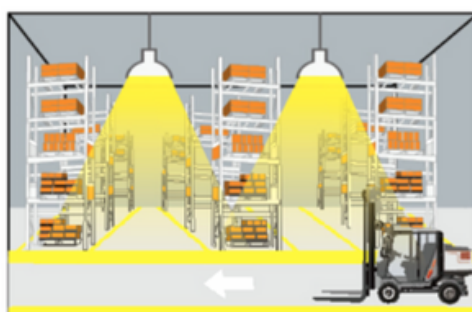
**60W-240W Industrial Light**



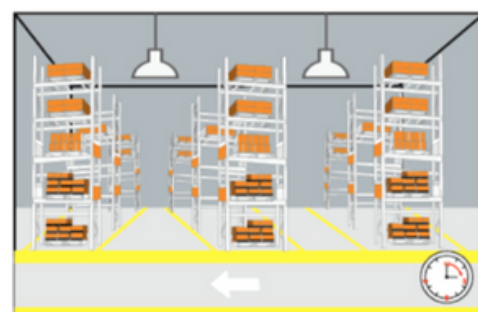
## **Emergency & Microwave Motion Sensor**



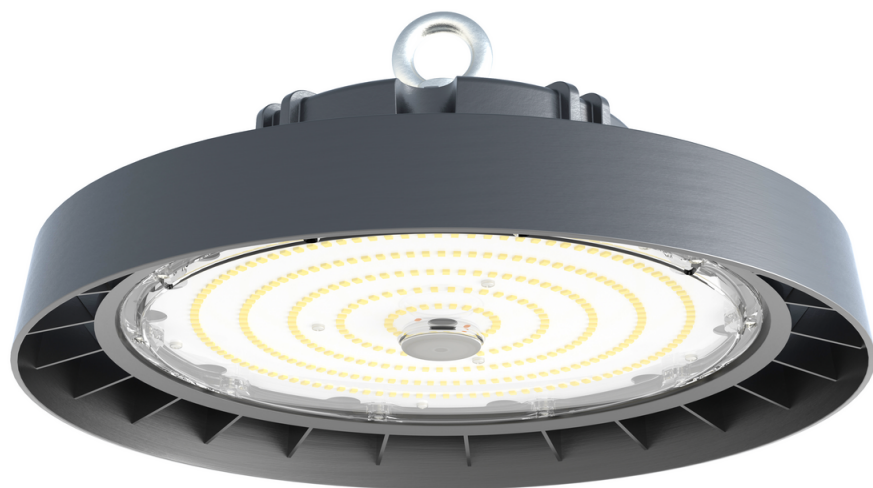
1. With sufficient ambient light, the light won't be switched on even if with motion signal



2. With insufficient ambient light, the sensor switches on the light when motion is detected



3. After elapse of hold Time, the sensor switches off the light when no motion is detected

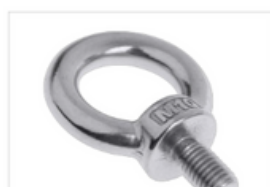


## BENEFITS

- High Luminous 150Lm/w
- **All In One Emergency, Motion Sensor,**
- Easy ,Fast installation
- **Max 15meter height installation**
- Hanger, Bracket installation
- **Excellent Heat Dissipation aluminum**
- 90° , 120° Distribution
- **IP65,IK08**
- CE,RoHs,IEC,UL certificates



## Installation Accessory



M10 Rings  
/Silver Ø25 mm  
Cast Iron



Bracket  
Black/Iron



Fall Safety Rope  
Silver/ Stainless  
Steel

Technical Parameter									
Model	Power	Input Voltage	Power Factor	Light Efficiency	CCT	CRI	IP Rate	Life Time	Emergency Time
BSA-UH-DCT0060-601	60W	AC100-277V 50/60Hz	≥0.95	8000LM	1800-6000K	≥75	IP65	≥100,000Hrs	EU :90minutes US: 180minutes
BSA-UH-DCT0100-601	100W			15000LM					
BSA-UH-DCT0150-601	150W			22500LM					
BSA-UH-DCT0200-601	200W			30000LM					
BSA-UH-DCT0240-601	240W			36000LM					



## BENEFITS

- **Intelligent working:** On/Off Function, Normal Motion detecting, Daylight Threshold
- Aluminum Housing, Excellent Heat Dissipation
- **Non-yellowing Flat Glass**
- High Luminous 145Lm/w
- IP65
- CE,RoHS,IEC certificates



## Technical Parameter

Model	Power	Input Voltage	Power Factor	Light Efficiency	CCT	CRI	Dimension (mm)
BSA-UH-DCT0060-101	60W	AC90-277V 50/60Hz	≥0.95	13000LM	2700-6500K	≥75	250*179
BSA-UH-DCT0100-101	100W			14500LM			300*182
BSA-UH-DCT0150-101	150W			21750LM			346*183
BSA-UH-DCT0200-101	200W			29000LM			380*183
BSA-UH-DCT0240-101	240W			34800LM			

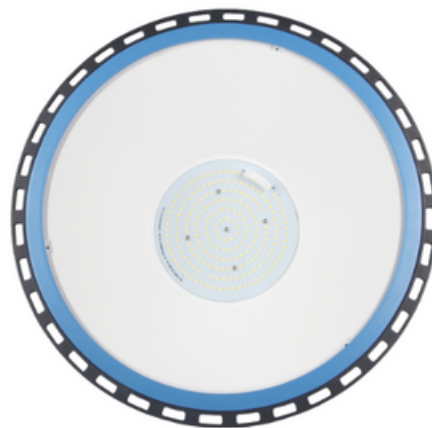
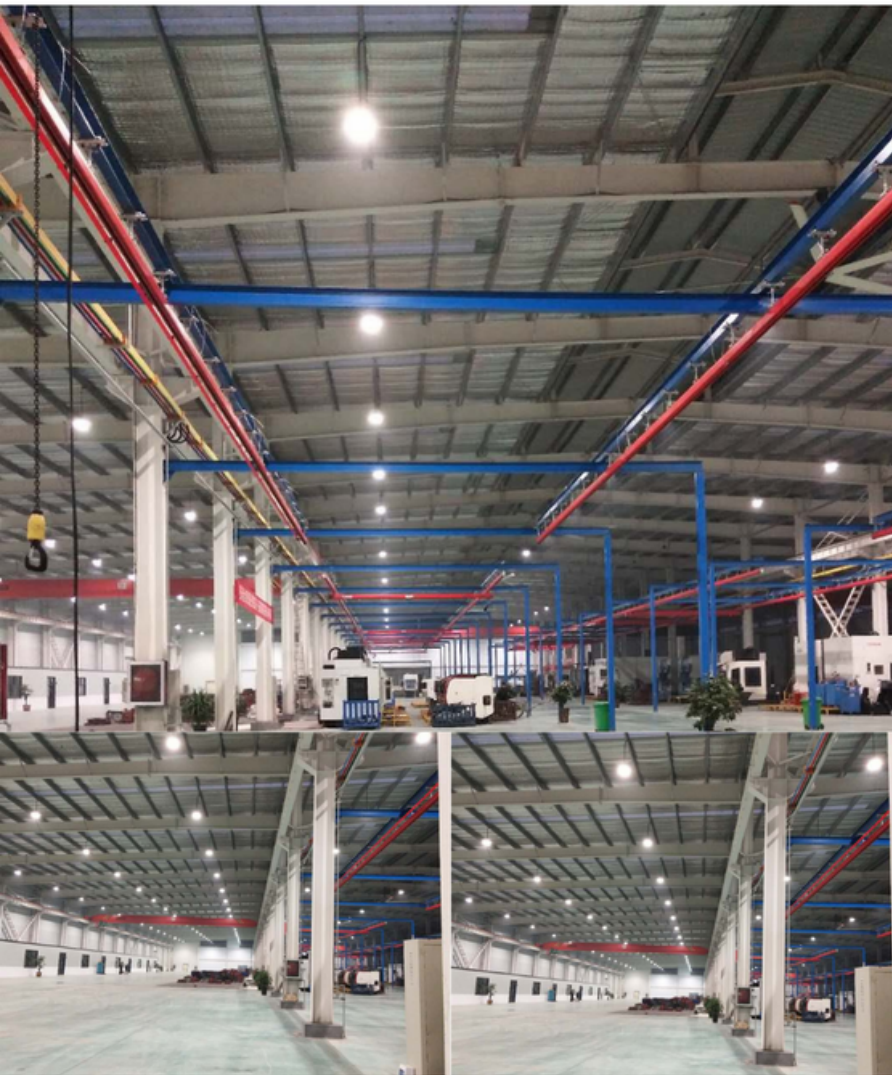
## BENEFITS

- High Luminous 135-150Lm/w
- Toughed Glass and Gasket
- Hanger, Bracket installation
- Excellent Heat Dissipation aluminum
- Nanometers tech reflector
- IP65, Indoor Outdoor application
- CE, RoHs, IEC certificates

5&7  
YEARS  
WARRANTY



LM-80 IP66



## Technical Parameter

Model	Power	Replacement	Input Voltage	Light Efficiency	CCT	CRI	Dimension (mm)
BSA-UH-DCT0080-301	80W	HPS250W	AC90-305V 50/60Hz	10800LM	2700-6500K	≥75	202.5x280x225
BSA-UH-DCT0100-301	100W	HPS300W		13500LM			324x232x263
BSA-UH-DCT0150-301	150W	HPS450W		20250LM			
BSA-UH-DCT0200-301	200W	HPS600W		27000LM			
BSA-UH-DCT0240-301	240W	HPS720W		32400LM			380x272x267





## BENEFITS

- Suitable Harsh Environment, High Temperature application
- Extremely Light Weight
- Non-yellowing, High Borosilicate Glass
- Cold Forging Aluminum Heat Dissipation 1070, High Heat Transfer
- Aluminum Reflector 45° 90° 120°
- Bracket, Hanger installation
- IP65, High Luminous 135-150Lm/w
- UL, CUL, CE, RoHS, IEC certificates



LM-80 IP66



## Technical Parameter

Model	Power	Replacement	Input Voltage	Light Efficiency	CCT	CRI	Dimension (mm)
BSA-UH-DCT0080-401	80W	HPS250W	AC90-305V 50/60Hz	10800LM	2700-6500K	≥75	343x343x365
BSA-UH-DCT0100-401	100W	HPS400W		13500LM			343x343x380
BSA-UH-DCT0125-401	125W	HPS500W		16875LM			481x481x361
BSA-UH-DCT0150-401	150W	HPS600W		20250LM			481x481x381
BSA-UH-DCT0200-401	200W	HPS800W		27000LM			